



NEW & BEST SELLERS

2016

SPRING / SUMMER

NEW

Trade Flex
Shorts

**BEST
SELLER**

Halo 2

MASTERS AT WORK. MASTERS OF WORKWEAR.

TESTED ON THE JOB



Every Scruffs product is tested before launch. We use live wear trials with real tradespeople and skilled workers in their challenging environments to ensure that Scruffs products keep you cool, dry, comfortable and protected.

NEW & BEST SELLERS

For full range visit scruffs.com

4-11

Safety Footwear:

Halo 2 Safety Trainer,
Switchback Boot, Twister Boot &
Twister Sport.

12-17

Work Shorts / Trousers:

Trade Flex Shorts, Trade Shorts,
Trade Flex Trouser, 3D Trade
Trouser, Worker Plus Trouser.

18-21

Work Tops:

Worker Polo, Worker T-shirt,
Trade Active Polo, Trade Hoodie,
Trade Sweatshirt.

22-23

Work Jackets:

Tech Softshell, Pro Softshell,
Worker Jacket.

24-27

Accessories:

Worker Lite Socks, Work Cap,
Trade Rucksack, Falcon Safety
Glasses, Eagle Safety Glasses,
Hawk Safety Glasses, Worker
Gloves, Leather Belt.



12.

The New
Trade Flex Shorts
are made from
a lightweight yet
hard wearing ripstop
material with 4-way
stretch panels that ensure
freedom of movement.



New
Worker
T-shirt

22.



Our new quarter length,
reinforced, breathable work
socks. Ideal for trainers or
boots in the warmer months.

24.



New
Worker
Polo

22.

**SAFETY
FOOTWEAR
FEATURE
ICONS KEY:**



Protective
Toe Cap



Protective
Midplate



Slip
Resistant



Anti-Static



Shock
Absorbing



Fuel Oil
Resistant



Heat
Resistant



Water
Resistant



Waterproof



Lightweight

HALO 2



LIGHTWEIGHT PROTECT



HALO 2

Safety rating: SBP SRA HRO
Steel toe & composite midplate



This sports
styled safety
trainer
features a
steel toe and
composite
midplate for
lightweight
flexibility.

SPECIFICATION:

Safety rating: SBP
Toe protection: Steel
Midplate protection: Composite
Slip rating: SRA
Shock absorbing: No
Fuel oil resistance: No
Outsole heat resistance: Yes
Anti-static: No
Water-resistant: No
Uppers: Suede leather & textile
Colours: Navy
Size: 7-12



Micro-Fresh[®]
for fresher living

Prevents mould and
reduces odours



Padded
tongue &
collar

Water-resistant upper

poron

Cushioning
for added
comfort

Steel toe cap

Durable
moulded toe
protector

Anti-static
to eliminate
the risk
of electric
shock

Shock absorption to
reduce stress on feet

Lightweight composite midplate

Flexible rubber outsole

Heat
resistant

Fuel oil
resistant

Slip resistant

Non-marking sole

SWITCHBACK

Safety rating: S3 SRA HRO

Steel toe & composite midplate

SPECIFICATION:

Safety rating: S3

Toe protection: Steel

Midplate protection: Composite

Slip rating: SRA

Shock absorbing: Yes

Fuel oil resistance: Yes

Outsole heat resistance: Yes

Anti-static: Yes

Water-resistant: Yes

Uppers: Nubuck leather & textile

Colours: Tan / black / brown

Size: 7-12

poron

Poron[®] cushioning materials are used within Scruffs insoles. The shock absorbing memory foam ensures an even distribution of pressure through the foot to reduce discomfort, aches and pains.





OUR BEST SELLING BOOT



Hard wearing mid-ankle work boot with a high-spec S3 safety rating. A steel toe and composite midsole provide lightweight protection. The cushioned insole and soft nubuck leather uppers deliver consistent comfort over long periods.

TWISTER

Padded tongue & collar

Micro-Fresh[®]
for fresher living

Prevents mould and reduces odours



Flexible nubuck leather upper

Steel toe cap

Steel midplate

Heat resistant sole

Fuel oil resistant

Slip resistant for safe working

Micro-Fresh[®] prevents the growth and spread of bacteria. It reduces unpleasant odours whilst being kind to human skin and the environment, and lasts for the lifetime of the product.

Micro-Fresh[®]
for fresher living

TWISTER

Safety rating: SBP SRC HRO

Steel toe & midplate

SPECIFICATION:

Safety rating: SBP

Toe protection: Steel

Midplate protection: Steel

Slip rating: SRC

Shock absorbing: No

Fuel oil resistance: Yes

Outsole heat resistance: Yes

Anti-static: No

Water-resistant: No

Uppers: Nubuck leather & textile

Colours: Tan / black

Size: Tan 3-12 / black 6-12





TRIED & TESTED

BOOTS YOU CAN RELY ON

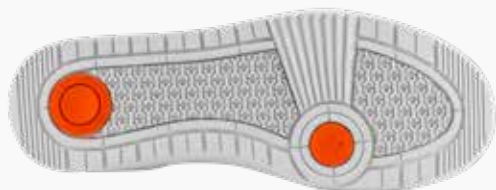


A great looking durable safety boot with a padded tongue & collar for extra comfort. The steel toe cap and midplate provide on site protection.

TWISTER SPORT

Safety rating: SBP SRC HR0

Steel toe & composite midplate



SPECIFICATION:

Safety rating: SBP

Toe protection: Steel

Midplate protection: Composite

Slip rating: SRC

Shock absorbing: No

Fuel oil resistance: No

Outsole heat resistance: Yes

Anti-static: No

Water-resistant: No

Uppers: Nubuck leather

Colours: Tan

Size: 7-12





This high street inspired safety boot features a steel toe and composite midplate for lightweight flexibility.

NEW

TRADE FLEX HOLSTER SHORTS

Lightweight work shorts with built in stretch panels

SPECIFICATION:

Pockets:

Holster pockets, cargo pockets
inc. mobile phone pocket

Tool storage:

Tool loops

Fit: Regular

Material composition:

Ripstop:

65% polyester & 35% cotton

Stretch:

92% nylon & 8% elastane

Material weight:

Ripstop: 220gsm

Stretch: 230gsm

Colour: Graphite / black

Size: 30-40"



Easy access
holster
pockets

Tool loops

Tear
resistant
ripstop
material



4-way
stretch
panel



4-way stretch gusset for flexibility

NEW

TRADE FLEX SHORTS

Lightweight work shorts with built in stretch panels

SPECIFICATION:

Pockets:

2x cargo pockets inc. mobile
phone pocket

Tool storage:

Tool loops

Fit: Slim

Material composition:

Ripstop:

65% polyester & 35% cotton

Stretch:

92% nylon & 8% elastane

Material weight: 250gsm

Colour: Graphite

Size: 30-40"





TRADE SHORTS

Multi-pocket work shorts



Flexible
stretch

panels for
freedom of
movement.

Made from a
lightweight,
durable and tear
resistant
ripstop fabric.

SPECIFICATION:

Pockets:

Holster pockets, cargo pocket, rule pocket, mobile phone pocket & secure zip pockets

Tool storage:

Tool loops & hammer loop

Fit: Regular

Material composition:

65% polyester & 35% cotton twill

Material weight: 250gsm

Colour: Slate / ink blue / black

Size: 28-40"



INSTANT FLEX APPEAL

Slim fitting trousers made with a flexible stretch fabric. Top loading knee pad pockets with two positions provide lasting comfort.



TRADE FLEX

Easy access
holster
pockets

Secure zip
pocket

Tool loops

Stretch
material

CORDURA®

Top loading
knee pad
pockets
with 2
positions

Slim fit

Adjustable
hammer
loop

Reinforced
pockets

Stretch
gusset
for
flexibility

Reinforced
hem for extra
durability

TRADE FLEX TROUSER

Slim fitting stretch trousers with
Cordura® reinforcement

SPECIFICATION:

Knee protection:

Cordura®, top loading

Pockets:

Holster pockets, cargo
pocket, rule pocket & mobile
phone pocket

Tool storage:

Tool loops & hammer loop

Fit: Slim

Material composition:

81% polyester &

19% cotton stretch

Material weight: 250gsm

Colour: Black

Size: 28-38S / 28-40R

30-40L

CORDURA®

Cordura® is a hard wearing fabric that's made with high strength nylon fibres to provide durable anti-abrasion protection in key areas such as the knees on work trousers and elbows on jackets.

We know that a reliable zip is vital to maximising product life. That's why every single pair of Scruffs trousers has a zip made by YKK who have an unrivalled reputation for quality.

YKK®

3D TRADE TROUSER

Shaped fit work trouser with Cordura®

CORDURA®

SPECIFICATION:

Knee protection:

Cordura®, top loading

Pockets:

Holster pockets, cargo pocket, rule pocket & mobile phone pocket

Tool storage:

Tool loops & hammer loop

Fit: Regular

Material composition:

65% polyester &

35% cotton twill

Material weight: 300gsm

Colour: Black / graphite

Size: 28-36S / 30-40R

30-40L





WORKER PLUS TROUSERS

Lightweight trousers with holster pockets

SPECIFICATION:

Knee protection:

Abrasion resistant, bottom loading

Pockets:

Holster pockets, cargo pocket, rule pocket & mobile phone pocket

Tool storage:

Hammer loop

Fit: Regular

Material composition:

65% polyester &

35% cotton twill

Material weight: 250gsm

Colour: Navy / black

Size: Navy 28-38R / 30-38L

Black 28-38S / 28-38R
/ 30-38L



Hard wearing, lightweight work trousers with tuck away holster pockets and bottom loading knee pad inserts. Reinforced throughout for extra durability.

NEW

WORKER POLO

Regular fit work polo, ideal for company profiling

SPECIFICATION:

Pockets: 1x chest pocket

Fit: Regular

Material composition:

65% polyester &

35% cotton jersey

Material weight: 190gsm

Colour: Graphite / black

Size: S-XXL



Classic styling for a professional look with discreet branding and blank left chest - ideal for embroidery. Made from a lightweight, easy-care fabric for all day comfort.

NEW

WORKER T-SHIRT

Regular fit work T-shirt, ideal for company profiling

SPECIFICATION:

Fit: Slim

Material composition:

65% polyester &

35% cotton jersey

Material weight: 160gsm

Colour: Navy / graphite

Size: S-XXL



Discreet branding and blank left chest - ideal for embroidery. Longer length design to stop the t-shirt riding up when working.



TRADE ACTIVE POLO

Slim fit polo shirt

SPECIFICATION:

Pockets: 1x zipped chest pocket

Fit: Slim

Material composition:

100% polyester pique

Material weight: 220gsm

Colour: Black / graphite

Size: S-XXL



Slim fitting work polo shirt with a raglan sleeve designed for freedom of movement. Lightweight, quick drying material provides all-day freshness and comfort.

TRADE HOODIE

Fleece hoodie with Abratect™ reinforcement

ABRATECT™

SPECIFICATION:

Pockets: 2x outer zipped pockets

Fit: Regular

Material composition:

65% polyester & 35% cotton brushed back fleece

Material weight: 300gsm

Colour: Black

Size: S-XXL



Flat lock stitching for comfort and durability



Abratect™ is an anti-abrasion fabric developed by Scruffs. It provides extra durability against scuffs and rips in higher wear areas such as elbows and cuffs to keep Scruffs tops and jackets working harder for longer.

ABRATECT™



TRADE SWEATSHIRT

Fleece sweatshirt with Abratect®

ABRATECT™

SPECIFICATION:

Pockets: 2x outer zipped pockets

Fit: Regular

Material composition:

65% polyester &

35% cotton brushed back fleece

Material weight: 320gsm

Colour: Grey

Size: S-XXL



Abrasion resistant forearm and cuff panels provide extra protection for long lasting durability.

Scruffs tops and jackets have been designed so that company logos, whether printed or embroidered, can easily be added to the areas of garments where company branding is most commonly applied.



TRADE TECH SOFTSHELL

Softshell jacket with abrasion resistant panels

SPECIFICATION:

Pockets:

3x outer zipped pockets

Fit: Regular

Waterproof: Water-resistant

Material composition:

95% polyester & 5% elastane

Material weight: 395gsm

Colour: Graphite

Size: S-XXL

SOFTSHELL JACKET

PRO SOFTSHELL

Technical jacket with soft fleece lining

SPECIFICATION:

Pockets:

3x outer zipped pockets &

1x internal pocket

Fit: Regular

Waterproof: Water-resistant

Material composition:

94% polyester & 6% elastane

Material weight: 395gsm

Colour: Black / charcoal

Size: S-XXL





FULLY WATERPROOF

WORKER JACKET

Waterproof jacket with a
lightweight lining

SPECIFICATION:

Pockets:

3x outer pockets & 1x
internal pocket

Fit: Regular

Waterproof: Yes

Material composition:

100% polyester ripstop

Colour: Charcoal

Size: S-XXL



NEW

WORKER LITE SOCKS (3PK)

Breathable, quarter length work socks

SPECIFICATION:

Material: 84% cotton, 12% nylon,
4% polypropylene & 1% elastane
Sizes: 7-9.5 & 10-13

Quarter length,
reinforced, breathable
work socks, ideal for
the warmer months.



WORK CAP

6 panel baseball cap

SPECIFICATION:

Material: 100% polyester
Colour: Grey
Sizes: One size

This
stylish
baseball
cap comes
with an
easily
adjustable strap,
providing a
great fit.





TRADE RUCKSACK

Work rucksack with multiple compartments

SPECIFICATION:

Material:

Outer: 100% nylon with PU backing

Lining: 100% polyester

Waterproof: Water resistant

Size: 20 litres

Various storage compartments including an insulated pocket for food & drink, and a large inner pouch for carrying workwear. A padded, vented back panel and straps provide maximum comfort.

FALCON SAFETY SPECS

Sealed fit safety glasses

SPECIFICATION:

Certification:

CE Rated to EN166

Material:

- Lenses:

100%
polycarbonate

- Frame:

100%
polycarbonate
with TPE

Sizes: One size



Detachable elastic strap included

EAGLE SAFETY SPECS

Lightweight safety glasses

SPECIFICATION:

Certification:

CE Rated to EN166

Material:

- Lenses:

100%
polycarbonate

- Frame:

100% nylon

Sizes: One size



HAWK SAFETY SPECS

Lightweight safety glasses

SPECIFICATION:

Certification:

CE Rated to EN166

Material:

- Lenses:

100%
polycarbonate

- Frame:

100% nylon

Sizes: One size



All glasses include a polyester bag for cleaning and storage.

SAFETY GLASSES



WORKER GLOVES (SPK)

5 pack of all-purpose work gloves

SPECIFICATION:

Certification:

Certified to EN388 level 4 1 3 1:

Abrasion resistance 4

Blade cut resistance 1

Tear resistance 3

Puncture resistance 1

Material:

100% nylon with nitrile coating

Colour: Black / graphite

Size: One size



KNEE PADS

Lightweight foam knee pads

SPECIFICATION:

Certification:

EN14404:2004+A1:2010

Type 2 penetration
resistance level 0

Material: 100% EVA foam

Sizes: One size



CLIP BELT

Cotton clip belt with
metal buckle

SPECIFICATION:

Material:

60% polyester &

40% cotton

Size: One size



WWW.SCRUFFS.COM



AUTHORISED DEALER

Scruffs - designed and distributed by Birchwood Price Tools. Birchwood Price Tools is a trading name of Toolstream Limited.

DISCLAIMER: All product descriptions are correct at the time of printing. Images are for guidance only and do not necessarily represent the goods on offer. The company reserves the right to modify products and withdraw promotions without prior notice. All promotional and value added FOC items are subject to stock availability, and may differ occasionally from those advertised. The Company endeavors to ensure that the information in this document is correct, but does not accept any liability for any error or omission herein. All rights are reserved. No part of this publication may be reproduced or transmitted in any form without written permission of the copyright holder.

STOCK NO. T54928